

Title	NERC CASI-2 data collected as part of the NCAVEO 2006 Field Campaign.		
Document created by	Emma Rockall		
Date	27 th August 2008		
Revision history	First release		
Purpose	To describe the CASI-2 data collection and pre-processing.		
Data files in set	c168021b.hdf	c168023a.hdf	c168023a.jpg
	c168031b.hdf	c168033a.hdf	c168033a.jpg
	c168041b.hdf	c168043a.hdf	c168043a.jpg
	c168051b.hdf	c168053a.hdf	c168053a.jpg
	c168061b.hdf	c168063a.hdf	c168063a.jpg
	c168071b.hdf	c168073a.hdf	c168073a.jpg
	c168081b.hdf	c168083a.hdf	c168083a.jpg
	c168091b.hdf	c168093a.hdf	c168093a.jpg
	c168101b.hdf	c168103a.hdf	c168103a.jpg
	Flight log: 168-GB0610.pdf		
PI of this data set	Andrew Wilson, CEH Monks Wood, Abbots Ripton, Huntington, PE28 2LS akw@ceh.ac.uk		
Terms of use (see NEODC website for the full version)	<p>The data may be used for all non-commercial research/project work undertaken by the NCAVEO network, in particular to learn about cal-val issues.</p> <p>If you wish to use the data set please contact the PI listed above. If you intend to publish a paper or give a presentation based on, or making significant use of these data, please consider including the PI(s) as co-author(s) at an early stage in the process.</p> <p>In all cases where the data are used in a presentation or publication, an acknowledgement must be given: for example, "<i>Data from the NCAVEO 2006 Field Campaign are provided courtesy of NCAVEO via the NERC Earth Observation Data Centre (NEODC).</i>"</p>		

A Dornier 228 aircraft operated by the NERC Airborne Research and Survey Facility (ARSF) collected CASI-2 data on 17th June 2006 between 10:40 am and 12:01pm GMT. The aircraft flew eight adjacent north-south flightlines to cover the whole study area, and one east-west across the study area, passing directly over the CFARR site (See Figure 1). Information about data collection can be found in documentation file '168-GB06-10.pdf'.

The Level 3a files in this dataset have been processed using the AZGCORR software package (Azimuth Systems UK) provided by the NERC Airborne Research and Survey Facility. This produced a 2 metre pixel geo-corrected product without the use of ground control points. JPEG images of the Level 3 files are available for each flight line as band 10, 8, 6 RGB false-colour composites. The CASI data has 15 bands with the wavelength and width specified in Table 1 (to one decimal place).

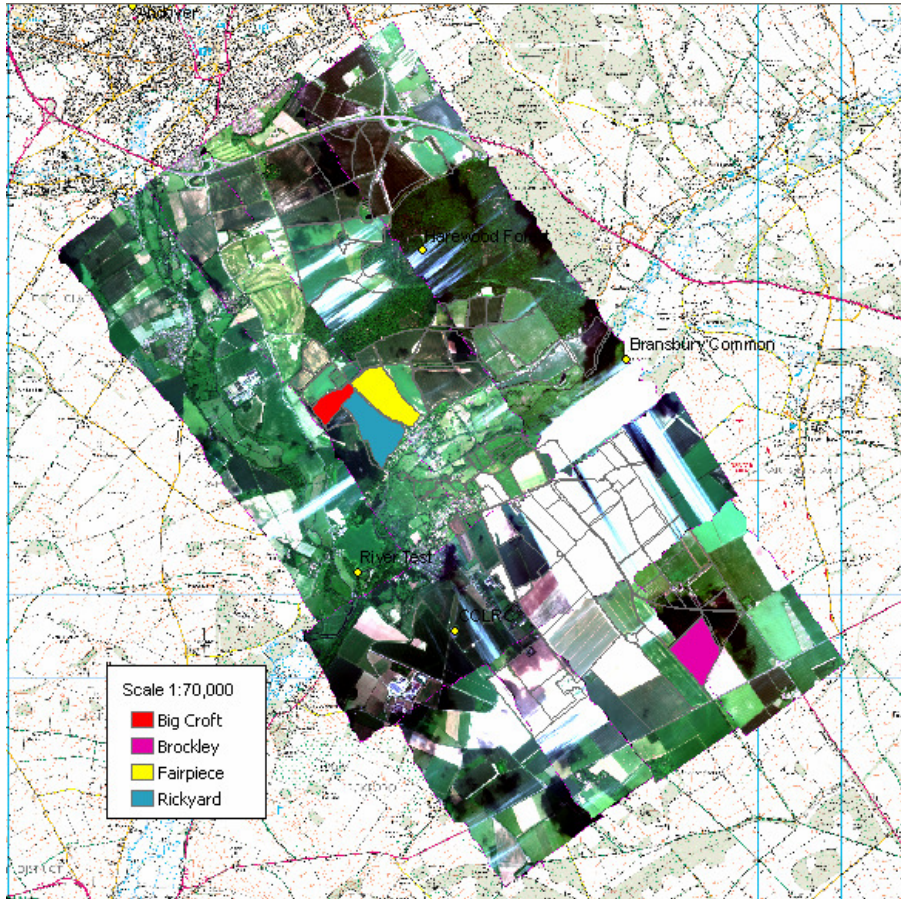


Figure 1 Visualisation of geometrically corrected NERC CASI flight lines from ArcMap GIS. Chilbolton Observatory (CCLRC) and fields used during the campaign have been labelled.

Band Number	Centre Wavelength (nm)	Full- width half maximum (nm)
1	451.3	10.4
2	491.4	9.5
3	553.6	5.8
4	609.5	6.8
5	652.4	4.0
6	672.5	4.9
7	703.1	4.9
8	712.7	4.9
9	743.4	4.9
10	752.0	4.0
11	764.5	3.0
12	782.8	4.0
13	822.2	4.9
14	866.4	4.9
15	941.4	4.9

Table 1 Spectral characteristics of the 15 spectral bands in CASI-2